

State of Wyoming Corner Record

(In compliance with the CORNER PERPETUATION AND FILING ACT, Wyoming Statutes, 2013 Section 33-29-901 through 33-29-910, and the Rules and Regulations of the Board of Professional Engineers and Professional Land Surveyors)

Reverse side of this form may be used if more space is needed.

Record of original survey and citation of source of historical information (if corner is lost or obliterated). Description of corner monumentation evidence found and/or monument and accessories established to perpetuate the location of this corner. Sketch of relative location of monument, accessories, and reference points with course and distance to adjacent corner(s) (if determined in this survey). Method and rationale for reestablishment of lost or obliterated corner.

RECOVERED: Aluminum Cap, PLS 2500, 1992

SET: Nothing

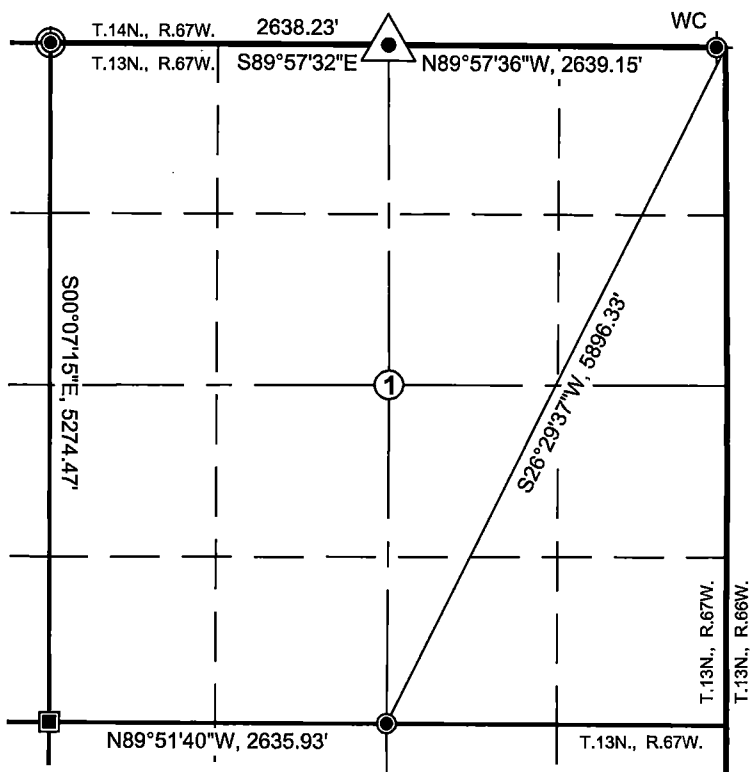
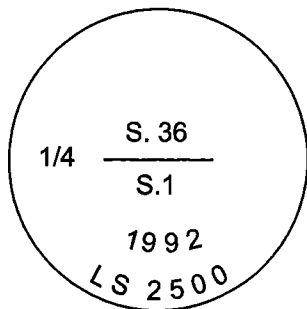


LEGEND

- SET ALUMINUM CAP
- EXISTING ALUMINUM CAP
- EXISTING IRON PIPE
- EXISTING REBAR
- EXISTING STONE
- EXISTING BRASS CAP



MONUMENT INSCRIPTION



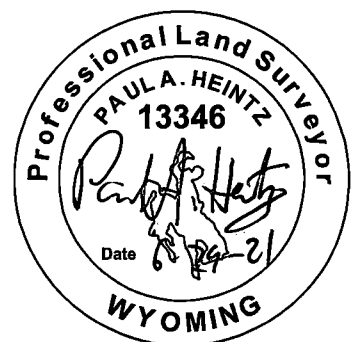
Date of Field Work: 06/20/2019 to Present Project No.: 2019-022 Point Number: 2802

Basis of Bearings: Wyoming State Plane Coordinate System, East Zone; Distances: Ground

CROSS INDEX PLAT

	1	2	3	4	5	6	7	8	9	10	11	12	13	14	15	16	17	18	19	20	21	22	23	24	25	
A																										
B																										
C	6	5	4	3	2	1																				
D																										
E																										
F																										
G	7	8	9	10	11	12																				
H																										
J																										
K	18	17	16	15	14	13																				
L																										
M																										
N																										
O	19	20	21	22	23	24																				
P																										
Q																										
R																										
S																										
T	30	29	28	27	26	25																				
U																										
V																										
W																										
X	31	32	33	34	35	36																				
Y																										
Z																										
	1	2	3	4	5	6	7	8	9	10	11	12	13	14	15	16	17	18	19	20	21	22	23	24	25	

Prepared/Filed By:
Paul A. Heintz
 WWC Engineering
 5880 ENTERPRISE DR, STE 600
 CASPER, WY 82609
 (307) 473-2707



This corner record was prepared by me or under my direction and supervision.
SEAL & SIGNATURE



RECP #: 814345
 RECORDED 7/7/2021 AT 11:08 AM BK# 2744 PG# 187
 Debra K. Lee, CLERK OF LARAMIE COUNTY, WY PAGE 1 OF 1

Corner Name: North 1/4 Cor., Section 1 T.13N., R.67W., 6th P.M.

Laramie County, Wyoming

Cross Index: A-23